

Exploring the Eye

Did you take a picture of the retina in your eye with the Ophthalmoscope?

Yes No

Did you try on the Pathology goggles?

Yes No

Which eye condition do you think would be the most difficult to live with? Circle your choice below.



Blindness



Blurry / Loss of Acuity



Cataracts



Loss of binocular vision



Diabetic Retinopathy



Macular Degeneration



Tunnel Vision



Right or Left Side Blind

"if you can read this you don't need glasses!"

Career Finder
Health Promotion Officer
Ophthalmic Scientist
Software Engineer
Optometrist / Optician



Patient Name _____

Career Finder Guide

The careers in **GREEN** require 8-9 grades. The careers in **ORANGE** require 9-4 grades.

Check out episode 21 of MMTV!

With just a few clicks, discover the salaries & career routes through school, college, uni and apprenticeships for the careers in this workbook!
www.medmav.co.uk/mmtv



Hearing

Tuning forks can be used to test outer hearing (by holding it near a patient's ear) AND bone conduction hearing (by placing it on the mastoid bone or the patient's head).

Did you test your hearing?

Yes No

Career Finder
Audiologist
Musical Therapist



Reflexes

Did you get a reflex response?

Yes No

Career Finder
Neurophysiologist
Paramedic



BASIC MEDICAL OBSERVATIONS

Height _____ cm

Temperature _____ °C

Blood pressure monitor:

Pulse oximeter:

Career Finder
Midwife
Nurse
Paramedic
Doctor

What did you listen to with the stethoscope? Write it on the line below!



IF YOU ENJOYED THE WORKSHOP, SCAN THE QR CODE TO CHECK OUT MORE COOL STUFF ON OUR WEBSITE!

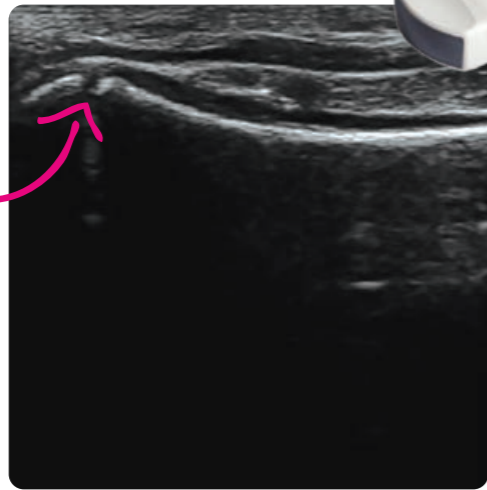


Ultrasound

Are you going to grow taller?

Yes No

What is this part of the bone called?



Career Finder
 Cardiac Physiologist
 Physiotherapist
 Sonographer
 Hepatologist

The growth plates disappear between the ages of 13 & 15 for girls and 15 & 17 for Boys. However, in some boys and girls the growth plate doesn't close until 18-21 years old!!!

What parts of your body did you look at today? Circle them below!

Bones Muscles Carotid artery
 Jugular Vein Heart Lungs Liver Kidneys

The gel is really important! It is the same density as our tissues and it helps transmit the sound waves into the body. The sound waves bounce off the different tissue boundaries and the probe detects the returning waves. These are converted into images by the main computer. Without the gel, the sound waves are reflected by the large difference in density between the probe and the air. In fact 99% of the sound waves are reflected back into probe and do not enter the body without the gel.

If you took some measurements, write them in the space below!



Did you know the frequency of the sound waves from an ultrasound machine is above 20,000 Hz. That is above our hearing range!



Pulse Doppler

Did you hear your pulse?

Yes No

How would you describe your heartbeat?

Triphasic (3 sounds) Diphasic (2 sounds) Monophasic (1 sound)

Career Finder
 Medical Engineer
 Medical Physicist
 Midwife
 Vascular scientist



Keyhole Surgery

How quickly did you manage to complete the shoelace challenge? _____ seconds

Career Finder
 Operating Department Practitioner (ODP)
 Surgeon



Blood vessels Infrared Vein Scanner

Did you see your veins?

Yes No

Phlebotomy

Did you take some blood from Andy?

Yes No

What angle was most effective for taking blood?

_____°

SCAN THIS QR CODE TO SEE HOW THE VEIN SCANNER WORKS!



Career Finder
 Haematologist
 Medical Engineer
 Nurse
 Phlebotomist



Recording an ECG

Calculate your heart rate from your ECG

Number of spikes _____ x 12 = _____ bpm

Label the PQRS and T parts of the trace below!



SCAN THIS QR CODE TO WATCH AN INTERVIEW WITH A CARDIAC PHYSIOLOGIST!



Who uses this kit?
 Cardiac Physiologist
 Paramedic
 Cardiologist

Did you know?

Some software and the coding that is required in the NHS can be considered a medical device. This is because they can impact a patient's treatment!

If you like coding, you could be a **Computer Scientist** in the NHS.

